

PORI

---

HONG KONG PUBLIC OPINION RESEARCH INSTITUTE

香 港 民 意 研 究 所

---

**Latest Tracking Poll Results**

**April 26, 2022**

# PORI



---

HONG KONG PUBLIC OPINION RESEARCH INSTITUTE

香 港 民 意 研 究 所

---

**Community Democracy Project -**

**Community Health Module**

**Latest Results**

**April 26, 2022**

# Contact Information - Community Health Module

3

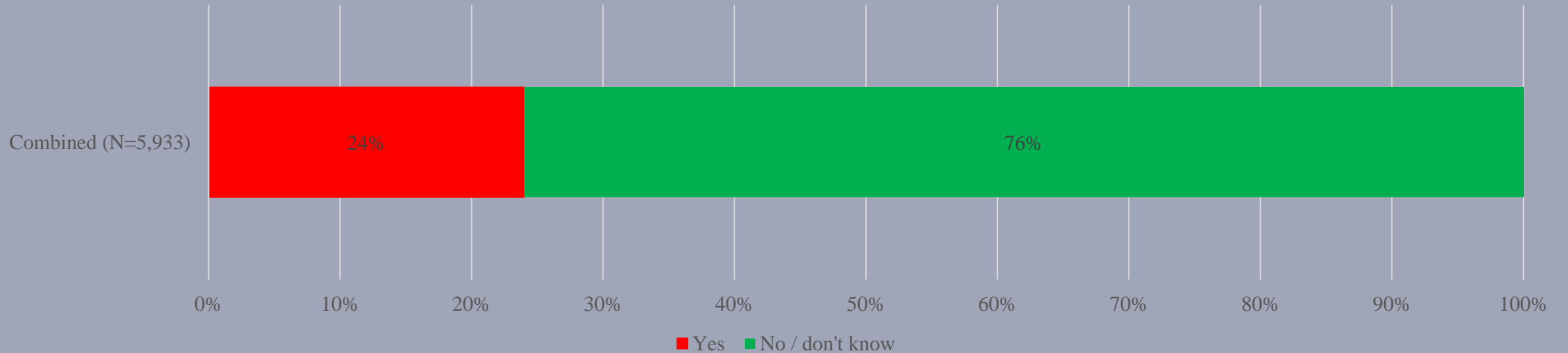
	<b>HKPOP Panel</b>
Date of survey	March 13, 3pm – April 24, 3pm
Survey method	Online survey
Target population	Hong Kong residents aged 12+
Total sample size	9,889
Response rate	11.4%
Sampling error	Sampling error of percentages at +/-1% at 95% confidence level
Weighting method	Rim-weighted according to 1) gender-age distribution, educational attainment (highest level attended) distribution and economic activity status distribution of Hong Kong population from Census and Statistics Department; 2) appraisal of political condition and political inclination distribution from regular tracking surveys.

# Survey Result - Community Health Module

4

- Latest survey period: 14/4-24/4/2022 (N=5,933)

	Yes	No / don't know
Q1 Have you ever contracted COVID-19?	24%	76%



# Survey Result - Community Health Module

5

- Latest survey period: 13/3-24/4/2022 (N=9,857)
- Last survey period: 20/2-13/3/2022 (N=7,329)
- Second last survey period: 7-20/2/2022 (N=8,984)

		Don't know / hard to say	Average
Q2 How likely do you think it is that you will contract novel coronavirus pneumonia over the next one month? [Logarithmic Scale]	Latest	22%	18% ▼*
	Last	21%	30%
	Second Last	24%	18%

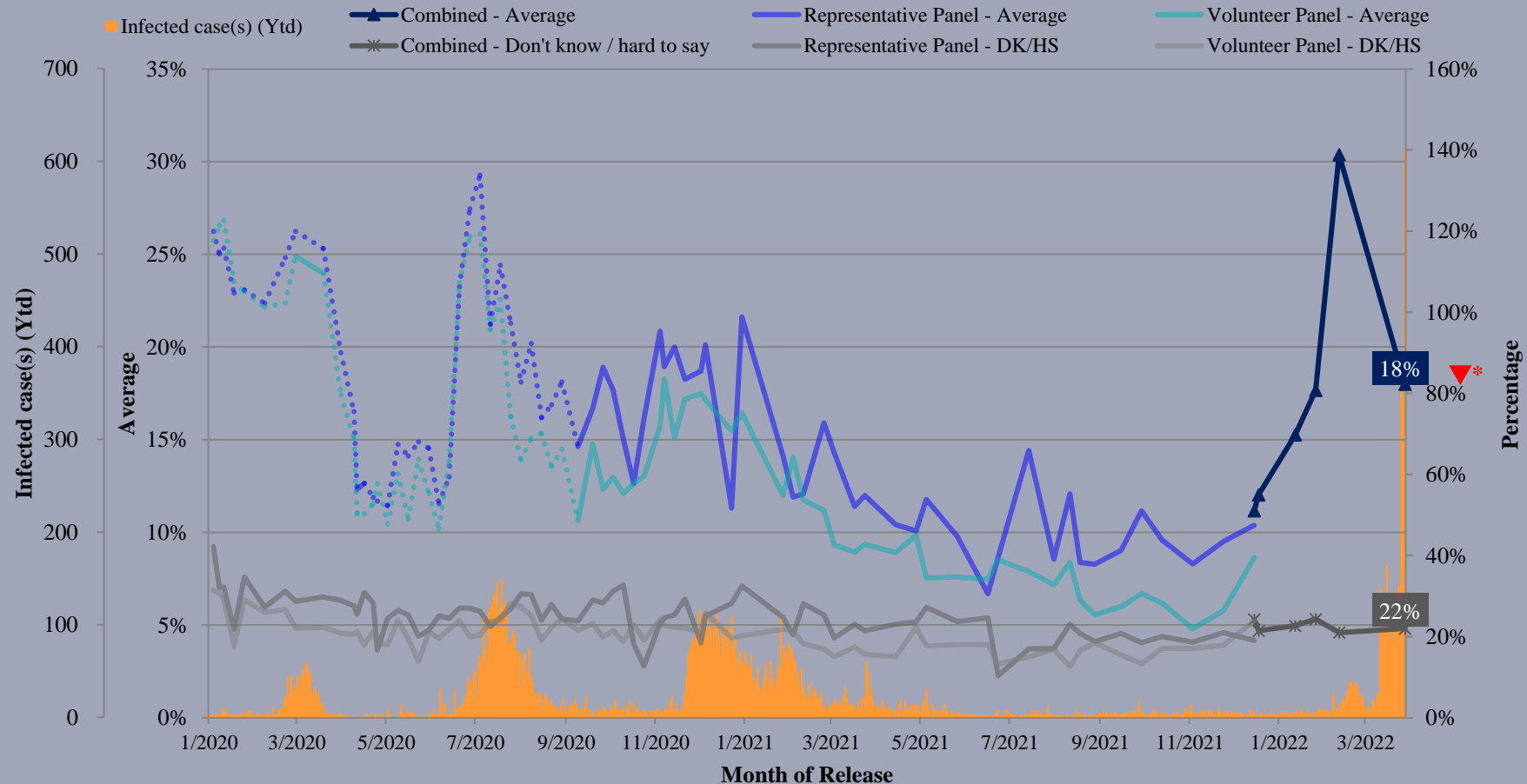
^ Answer options included: 0-10 rating scale, others and don't know / hard to say. Answer options changed from linear scale to logarithmic scale since Oct 2020.

\* Significant change

# Survey Result - Community Health Module

6

## Assessment of the public's expected chance of COVID-19 infection



^ Answer options included: 0-10 rating scale, others and don't know / hard to say. Answer options changed from linear scale to logarithmic scale since Oct 2020.

\* Significant change

# Survey Result - Community Health Module

7

- Latest survey period: 13/3-24/4/2022 (N=9,877)
- Last survey period: 20/2-13/3/2022 (N=7,330)
- Second last survey period: 7-20/2/2022 (N=8,989)

		Satisfied	Half-half	Dissatisfied	Mean <sup>†</sup>
Q2 How satisfied or dissatisfied are you with the government's performance in handling novel coronavirus pneumonia?	Latest	10% ▲*	17% ▲*	73% ▼*	1.8 ▲*
	Last	7%	12%	80%	1.6
	Second Last	14%	16%	69%	2.0

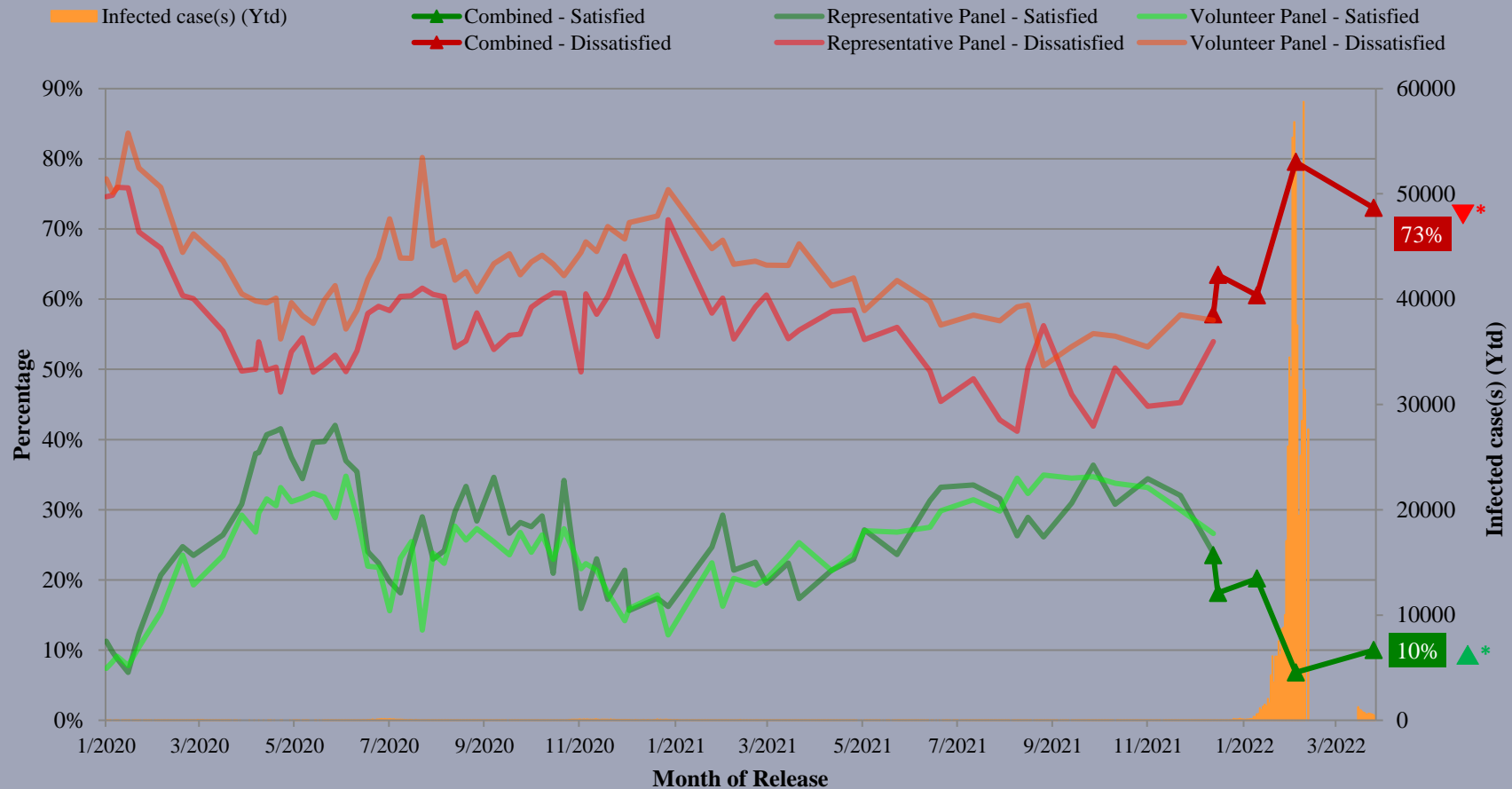
<sup>^</sup> Answer options included: very much satisfied, somewhat satisfied, half-half, somewhat dissatisfied, very much dissatisfied and don't know / hard to say

<sup>†</sup> The mean value is calculated by quantifying all individual responses into 1, 2, 3, 4, 5 marks according to their degree of satisfaction, where 1 is the lowest and 5 the highest, and then calculate the sample mean.

\* Significant change

# Survey Result - Community Health Module

## Appraisal of HK Government's performance in handling novel coronavirus pneumonia



^ Answer options included: very much satisfied, somewhat satisfied, half-half, somewhat dissatisfied, very much dissatisfied and don't know / hard to say

\* Significant change



PORI

---

HONG KONG PUBLIC OPINION RESEARCH INSTITUTE

香 港 民 意 研 究 所

---

限聚指數

**Group Gathering Prohibition Index**

**26/4/2022**

# 樣本資料 - 限聚指數基準調查

## Contact Information - Group Gathering Prohibition Index Benchmark Survey

10

	香港民研意見群組成員 HKPOP Panel
調查日期 Survey date	14/4 15:00 – 22/4 19:00
調查方法 Survey method	以電郵接觸群組成員，並於網上完成調查 Online survey
訪問對象 Target population	十二歲或以上的香港市民 Hong Kong residents aged 12+
總成功樣本 Total sample size	4,510
回應比率 Response rate	4.8%
抽樣誤差 Sampling error	95% 置信水平，百分比誤差 +/-1% Sampling error of percentages at +/-1% at 95% confidence level
加權方法 Weighting method	按照1) 政府統計處提供的全港人口年齡及性別分佈、教育程度（最高就讀程度）及經濟活動身分統計數字；2) 常規調查中的政治狀況評價及政治取向分佈，以「反覆多重加權法」作出調整。 Rim-weighted according to 1) gender-age distribution, educational attainment (highest level attended) distribution and economic activity status distribution of Hong Kong population from Census and Statistics Department; 2) appraisal of political condition and political inclination distribution from regular tracking surveys.

# 限聚指數

## Group Gathering Prohibition Index

11

- **最新調查日期 Latest survey date: 14-22/4/2022 (N=4,510)**
- **上次調查日期 Last survey date: 11-16/3/2022 (N=6,324)**
- **上上次調查日期 Second last survey date: 14-18/2/2022 (N=4,984)**

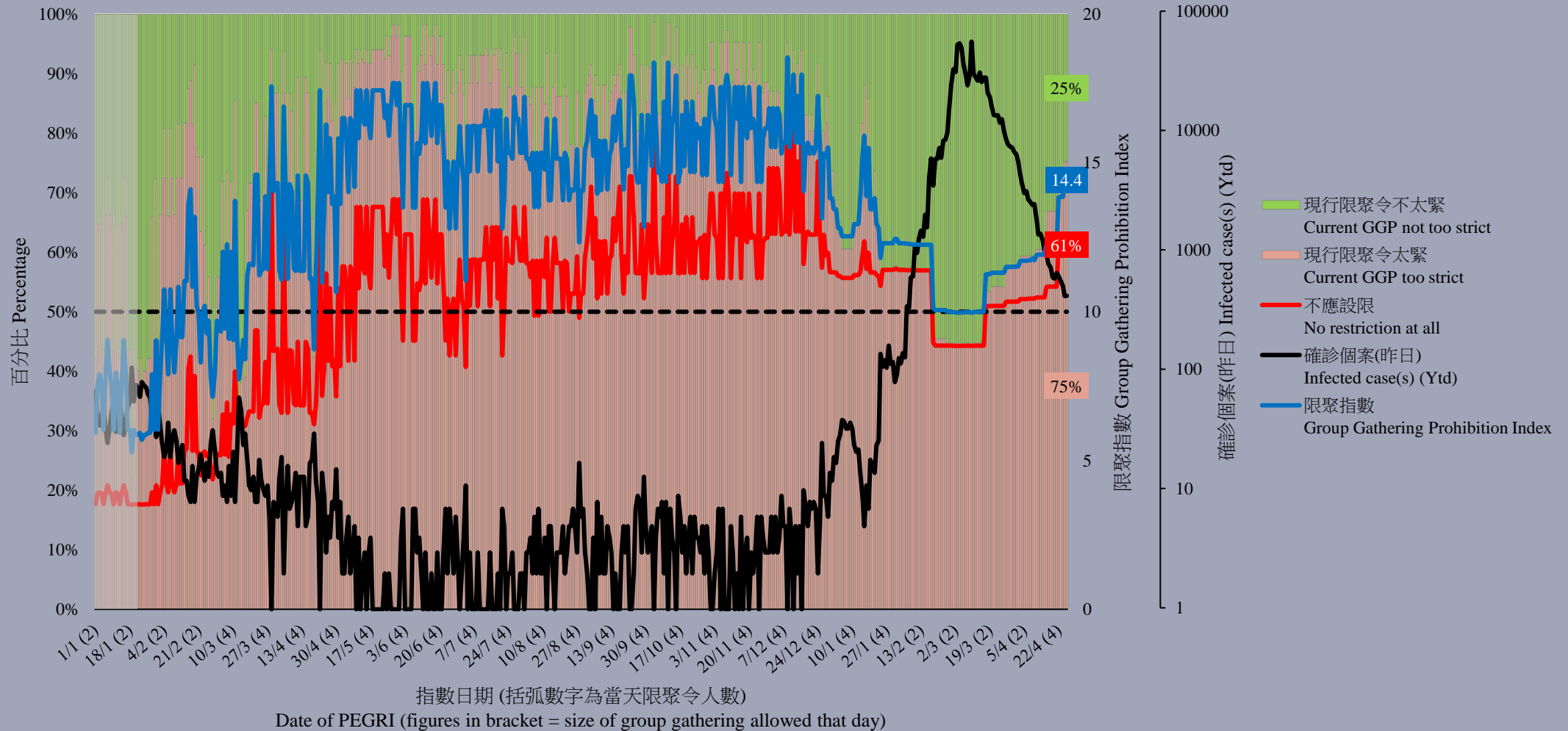
意見題目	Opinion Questions
<p>你認為香港應否無條件全面撤銷「限聚令」？</p> <ul style="list-style-type: none"> <li>▪ 應該無條件撤銷「限聚令」</li> <li>▪ 不應該，應視乎疫情而定</li> <li>▪ 不知道／很難說</li> </ul> <p>[追問沒有選擇應該“無條件撤銷「限聚令」”者]            你認為每天新增確診個案數應是多少，才適合將「限聚令」訂於2人？            你認為每天新增確診個案數應是多少，才適合將「限聚令」訂於4人？            你認為每天新增確診個案數應是多少，才適合將「限聚令」訂於8人？            你認為每天新增確診個案數應是多少，才適合將「限聚令」訂於16人？            你認為感染個案清零多少天後，限聚令應該全面撤銷？</p> <p>請於以下欄位列舉你認為合適的 [個案數 及 限聚人數] 組合.....</p>	<p>Do you think the regulation prohibiting gatherings of more than a specific number of people in public places should be completely lifted unconditionally in Hong Kong?</p> <ul style="list-style-type: none"> <li>▪ Yes, the ban should be lifted unconditionally</li> <li>▪ No, it should depend on the epidemic situation</li> <li>▪ Don't know / hard to say</li> </ul> <p>[For respondents NOT answering “Yes, the ban should be lifted unconditionally”]            How many newly confirmed cases each day should there be before it would be appropriate to prohibit gatherings of more than 2 people?            How many newly confirmed cases each day should there be before it would be appropriate to prohibit gatherings of more than 4 people?            How many newly confirmed cases each day should there be before it would be appropriate to prohibit gatherings of more than 8 people?            How many newly confirmed cases each day should there be before it would be appropriate to prohibit gatherings of more than 16 people?            After how many days of zero infection do you think the group gathering ban should be lifted altogether?</p> <p>Please list combinations of [number of cases &amp; number of people allowed in gatherings] that you think is appropriate in the field below:</p>

# 調查結果 - 限聚接受程度

## Survey Result – Group Gathering Prohibition Acceptance Level

12

限聚接受程度 Group Gathering Prohibition Acceptance Level



## 限聚指數 - 分析評論

### Group Gathering Prohibition Index – Commentary

13

獨立評論人潘麒智指出：「第五波疫情爆發至今，不少人仍然十分期望政府放寬限聚措施。不過，政府因為害怕疫情反覆而要維持四人限聚。事實上，因為市民的抵抗力都提高了，政府應在母親節前從善如流，讓市面活動回覆正常一些。另外，如果不能對內地通關，便要考慮向外國通關。」

**Independent commentator KC Poon observed, “Since the outbreak of the fifth wave of the epidemic, many people are still expecting the government to relax the restriction on group gathering. However, the government has to maintain the four-person limit for fear of a recurrence of the epidemic. In fact, since people's immunity has been improved, the government should respond to the public's wishes before Mother's Day and let the market activities return to normal. In addition, if border resumption is not possible for the Mainland, then we have to consider foreign countries.”**

PORI

---

HONG KONG PUBLIC OPINION RESEARCH INSTITUTE

香 港 民 意 研 究 所

---

**Latest Tracking Poll Results**

**April 26, 2022**

# Survey Topic

15

- **Popularity of HKSAR Government**
  - People's satisfaction with the HKSAR Government
  - People's trust in the HKSAR Government
  - People's appraisals of society's conditions
- **Public Sentiment Index**
- **People's Appraisal of Policy Areas of the Government**
  - Handling relation with the Central Government
  - Protecting human rights and freedom
  - Maintaining economic prosperity
  - Improving people's livelihood
  - Pace of democratic development

# Survey Result - Popularity of HKSAR Government

16

## ● People's satisfaction with the HKSAR Government

	21-25/3/2022	19-22/4/2022	Change	Record
Satisfaction rate	10%	19%	▲9% *	Record high since Jan. 2022
Dissatisfaction rate	72%	61%	▼11% *	Record low since Jan. 2022
Net satisfaction rate	-62%	-42%	▲20% *	Record high since Jan. 2022
Mean value	1.8	2.2	▲0.4 *	Record high since Feb. 2022

- Regarding the HKSAR Government, the latest satisfaction rate is 19%, whereas dissatisfaction rate stands at 61%, thus the net satisfaction is negative 42 percentage points, which has risen sharply by 20 percentage points from a month ago. The mean score is 2.2, meaning close to “quite dissatisfied” in general.

\* Significant change



# Survey Result - Popularity of HKSAR Government

17

## ● People's trust in the HKSAR Government

	21-25/3/2022	19-22/4/2022	Change	Record
Trust	24%	37%	▲13% *	Record high since Dec. 2021
Distrust	58%	45%	▼13% *	Record low since Nov. 2021
Net trust	-35%	-8%	▲26% *	Record high since Nov. 2021
Mean value	2.3	2.7	▲0.4 *	Record high since Dec. 2021

- Regarding people's trust in the HKSAR Government, 37% of the respondents expressed trust, 45% expressed distrust, thus the net trust value is negative 8 percentage points, which **has surged** by 26 percentage points from a month ago. The mean score is 2.7, meaning between “quite distrust” and “half-half” in general.

\* Significant change

# Survey Result - Popularity of HKSAR Government

18

## • Net satisfaction rates of society's conditions

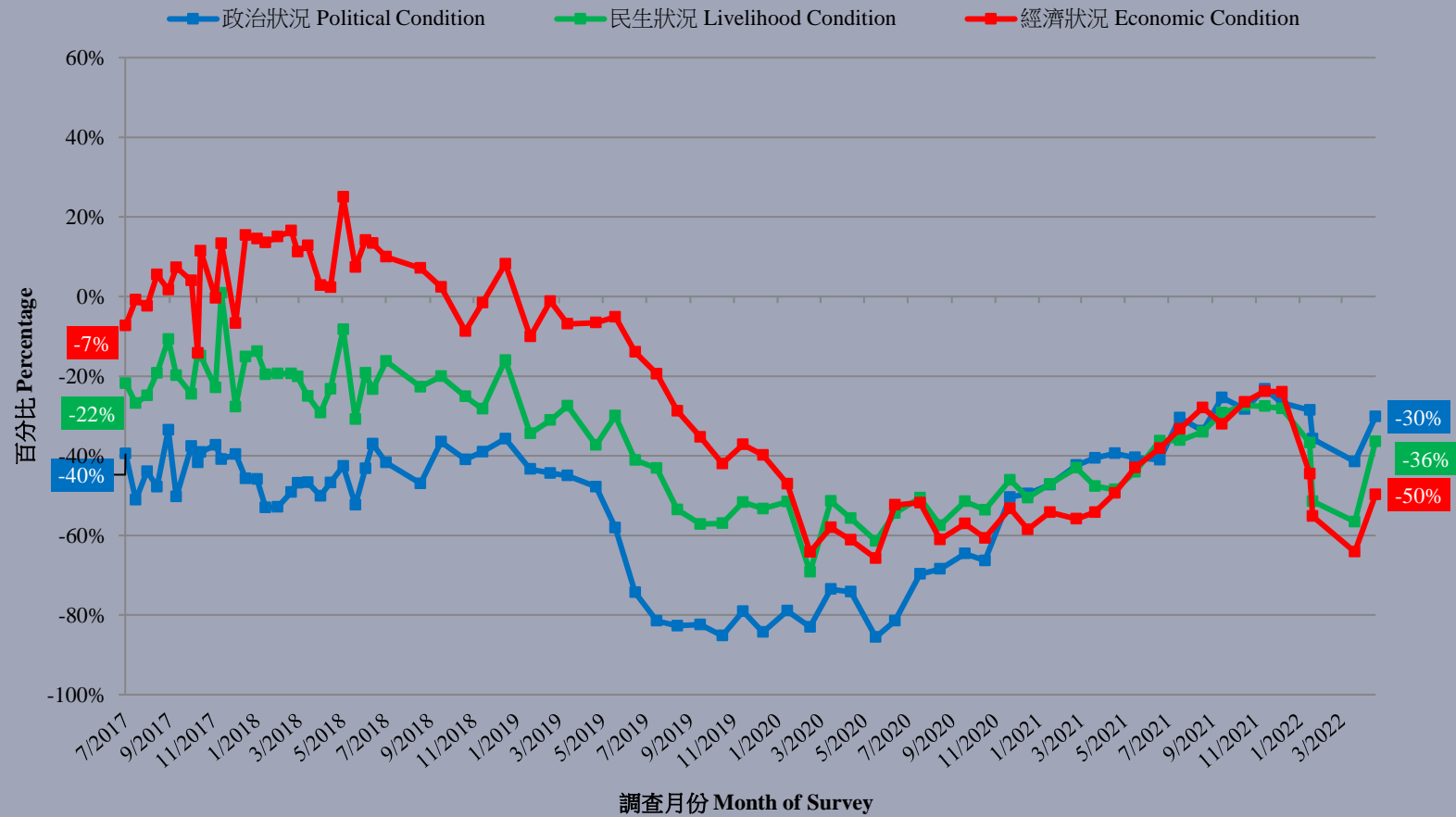
	21-25/3/2022	19-22/4/2022	Change	Record
Political condition	-41%	-30%	▲11% *	Record high since Jan. 2022
Livelihood condition	-57%	-36%	▲20% *	Record high since Dec. 2021
Economic condition	-64%	-50%	▲14% *	Record high since Jan. 2022

- As for people's satisfaction with the current political, livelihood and economic conditions, the net satisfaction rates are negative 30, negative 36 and negative 50 percentage points respectively. The mean scores fall between 2.2 and 2.3, meaning between “quite dissatisfied” and “half-half” in general. The net satisfaction rates of all conditions have **increased significantly** compared to a month ago.

\* Significant change

# Survey Result - Popularity of HKSAR Government

市民對社會狀況的評價滿意率淨值 (按次計算)  
Net satisfaction rates of people's appraisals of society's conditions (Per Poll)  
(7/2017 – 4/2022)



# Survey Topic

20

- **Popularity of HKSAR Government**
  - People's satisfaction with the HKSAR Government
  - People's trust in the HKSAR Government
  - People's appraisals of society's conditions
- **Public Sentiment Index**
- **People's Appraisal of Policy Areas of the Government**
  - Handling relation with the Central Government
  - Protecting human rights and freedom
  - Maintaining economic prosperity
  - Improving people's livelihood
  - Pace of democratic development

# Survey Result - Public Sentiment Index

21

## ● Public Sentiment Index (PSI)

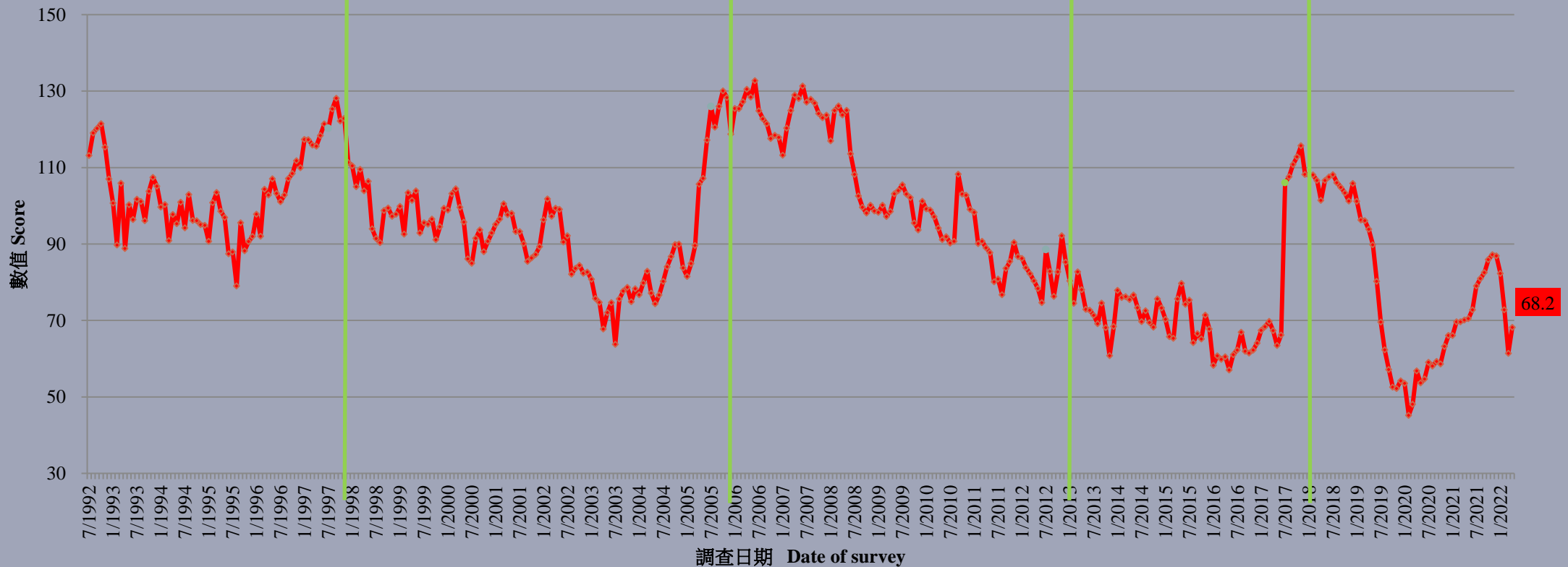
	11/3/2022	25/3/2022	Change	Record
Public Sentiment Index (PSI)	59.4	77.0	▲17.6	Record high since Feb. 2022
Government Appraisal (GA)	62.0	73.6	▲11.6	Record high since Jan. 2022
Society Appraisal (SA)	58.2	78.1	▲19.9	Record high since Feb. 2022

- All PSI, GA and SA scores range between 0 to 200, with 100 meaning normal.
- The latest PSI stands at 77.0, up by 17.6 points from early April. It can be considered as among the worst 6% across the past 20 years or so. Two component scores of PSI also can be considered as among the worst 4% and 7% across the past 20 years or so respectively.

# Survey Result - Public Sentiment Index

22

民情指數 (按月計算)  
Public Sentiment Index (monthly average)  
(7/1992 - 4/2022)



# Survey Topic

23

- Popularity of HKSAR Government
  - People's satisfaction with the HKSAR Government
  - People's trust in the HKSAR Government
  - People's appraisals of society's conditions
- Public Sentiment Index
- People's Appraisal of Policy Areas of the Government
  - Handling relation with the Central Government
  - Protecting human rights and freedom
  - Maintaining economic prosperity
  - Improving people's livelihood
  - Pace of democratic development

# Survey Result - People's Appraisal of Policy Areas of the Government

24

Net satisfaction rate	15-18/11/2021	19-22/4/2022	Change	Record
Handling relation with the Central Government	1%	1%	▼1%	Record <b>low</b> since Apr. 2021
Protecting human rights and freedom	-9%	-12%	▼4%	Record <b>low</b> since Apr. 2021
Maintaining economic prosperity	-30%	-26%	▲3%	Record <b>high</b> since Dec. 2018
Improving people's livelihood	-16%	-30%	▼14% *	Record <b>low</b> since Apr. 2021
Pace of democratic development	-28%	-31%	▼3%	Record <b>low</b> since Apr. 2021

- The latest net satisfaction rates of four policy areas are negative. Only that in **handling its relation with the Central Government** stands at positive 1 percentage point, while the net satisfaction rates of the government's performance in **protecting human rights and freedom**, **its pace of democratic development**, **maintaining economic prosperity** and **improving people's livelihood** stand at negative 12, negative 26, negative 30 and negative 31 percentage points respectively. The net satisfaction rate of **maintaining economic prosperity** has registered **significant and dramatic decrease** compared to five months ago, whereas the net satisfaction rate of the performance in its pace of democratic development has registered a **new high** since December 2018.

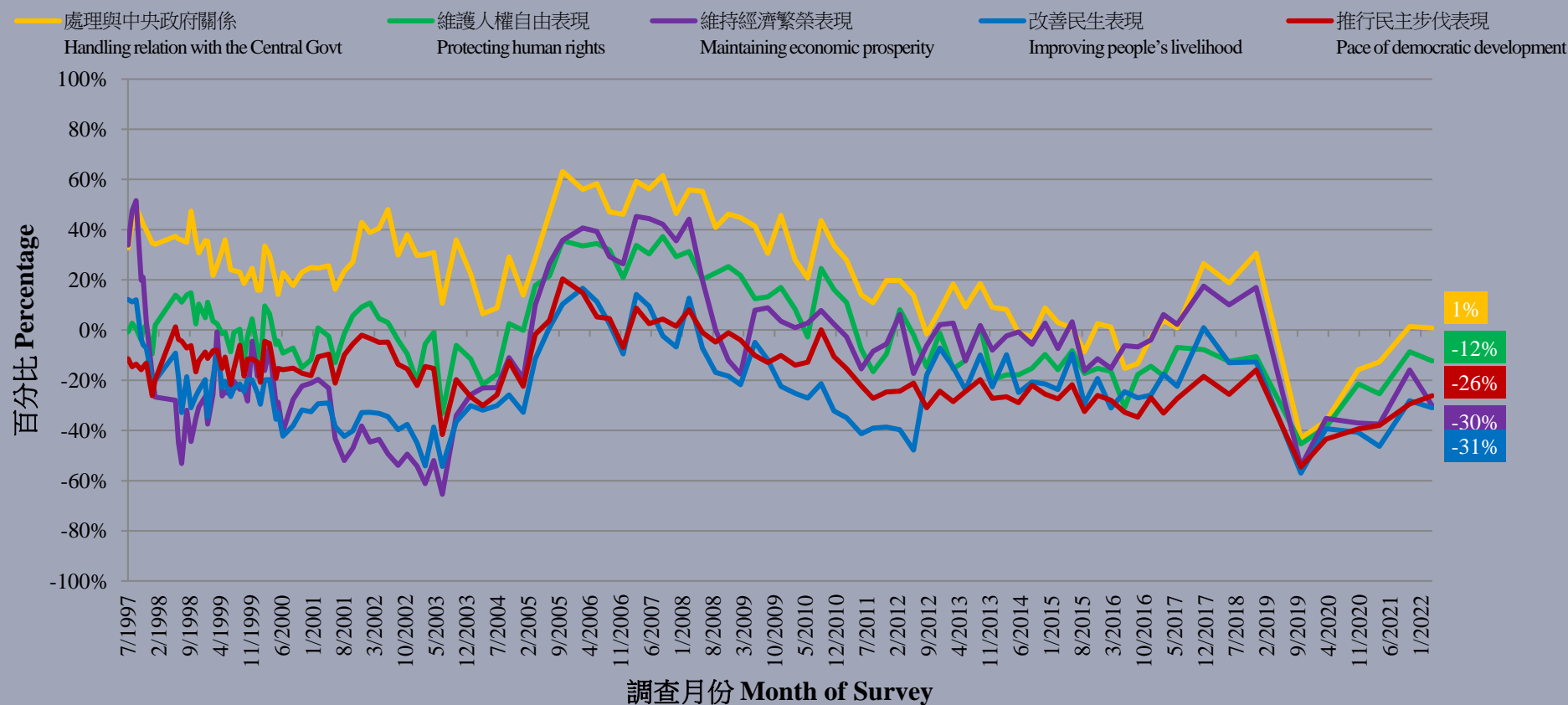
\* Significant change



# Survey Result - People's Appraisal of Policy Areas of the Government

25

市民對特區政府各項表現的滿意淨值- 綜合圖表 (按次計算)  
People's Net Satisfaction of the Performance of the HKSAR Government in Different Aspects - Combined Charts  
(Per Poll)  
(7/1997 - 4/2022)



# Survey Result - People's Appraisal of Policy Areas of the Government

26

市民對特區政府各項表現的滿意淨值- 綜合圖表 (按次計算)  
 People's Net Satisfaction of the Performance of the HKSAR Government in Different Aspects - Combined Charts  
 (Per Poll)  
 (12/2017 - 4/2022)

